

Streamline PRS™ Dielectric Unions are for use in commercial and residential applications to prevent galvanic corrosion and stray current when joining copper to steel. Sizes range from 1/2" – 2" and the fittings are designed to join ASTM B88 (Types K, L, M) hard-drawn copper tube (1/2" – 2") and soft copper tube (1/2" – 1-1/4") to threaded steel pipe.

ADVANTAGES

- Size range from 1/2" to 2"
- Press adapter made from 99.9% wrought copper
- Zinc-plated forged steel for corrosion resistance
- SURE PRS™ Seal - 360° leak before press detection
- "Lead-Free" and drinking water compliant
- 50-year limited warranty

INSTALLATION

- All tubing must comply with the ASTM B88 standard
- Compatible with most common tools and jaws
- Leak detection feature helps identify un-pressed connections
- Approved for use as mechanical joints in exposed or behind-the-wall applications

OPERATING PARAMETERS

- Operating Pressure 200 PSI CWP max
- Operating Temperature: -20°F - 250°F

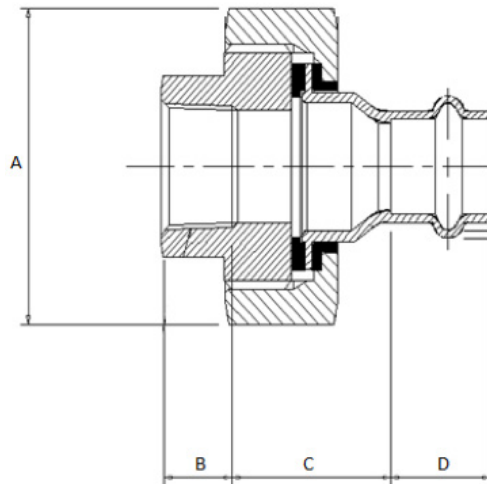
SYSTEM BENEFITS

- Fast and easy to use
- Flameless
- Permanent connections
- Consistent, professional appearance
- Less equipment required
- Environmentally friendly system
- Compatibility of fittings and tools



STANDARDS

- ANSI/ASME B16.51
- ANSI/ASME B1.20.1
- NSF/ANSI 61
- NSF/ANSI 372



DIMENSIONS IN INCH

Size (Nominal)	A	B	C	D
1/2"	1.89	0.53	1.20	0.75
3/4"	2.17	0.55	1.22	0.91
1"	2.60	0.69	1.10	0.91
1 1/4"	2.60	0.69	1.20	1.02
1 1/2"	3.23	0.73	1.32	1.42
2"	3.74	0.77	1.44	1.58