

Mueller Streamline is proud to offer CYCLEMASTER® Multi Split Ball Valves, DRYMASTER® Filter Driers, and Hermetically Sealed Moisture Indicator/Sight Glasses designed with FTG x FTG ends for easy use with Streamline® ACR Copper Press Fittings. UL Recognized to 700 PSI and compatible with R410A and other commonly used refrigerant gases and oils, these specialized Protection Devices allow for turnkey installation into flameless HVACR systems.

CYCLEMASTER® FTG X FTG MULTI SPLIT BALL VALVE WITH ACCESS PORT

- Available in sizes 1/4" – 1-3/8"
- Available with insulation (select sizes)
- Operating Temperature: -40°F – 300°F / -40°C – 149°C
- Full port construction to match line size ID
- Internally equalized ball design
- Rupture-proof encapsulated stem
- MCM Seal Technology
- Certifications:
 - UL/cUL Listed
 - Conforms to Pressure Equipment Directive 2014/68/EU
 - CRN OC1241.9C



DRYMASTER® FTG X FTG FILTER DRIERS

- Configurations Available:
 - O.D.: 3/8" and 1/2"
 - Liquid Line or Heat Pump
 - 8 or 16 Cubic Inches
- Operating Temperature: -40°F – 160°F / -40°C – 70°C
- Solid core design
- High pressure shell and connections
- High retention filter for removal of particulate as small as 25 microns
- Certifications:
 - UL/cUL Listed
 - Conforms to EU Pressure Equipment Directive and UK Pressure Equipment Regulation



HERMETICALLY SEALED FTG X FTG SIGHT GLASS/MOISTURE INDICATORS

- Available in sizes 1/4" to 1-1/8"
- Operating Temperature: -40°F – 185°F / -40°C – 85°C
- Designed for maximum flow and minimum pressure drop
- Large viewing window and indicator for better visibility
- Provides accurate identification of system conditions
- Certifications:
 - UL/cUL Recognized
 - Conforms to EU Pressure Equipment Directive and UK Pressure Equipment Regulation



- Moisture Content PPM:

REFRIGERANT	75°F LIQUID REFRIGERANT		100°F LIQUID REFRIGERANT	
	Green/Dry	Yellow/Wet	Green/Dry	Yellow/Wet
R-32	30	125	45	185
R-134A	25	110	45	175
R-404A	20	75	25	130
R-407C	30	145	55	230
R-410A	25	165	45	300
R-507A	15	75	30	140

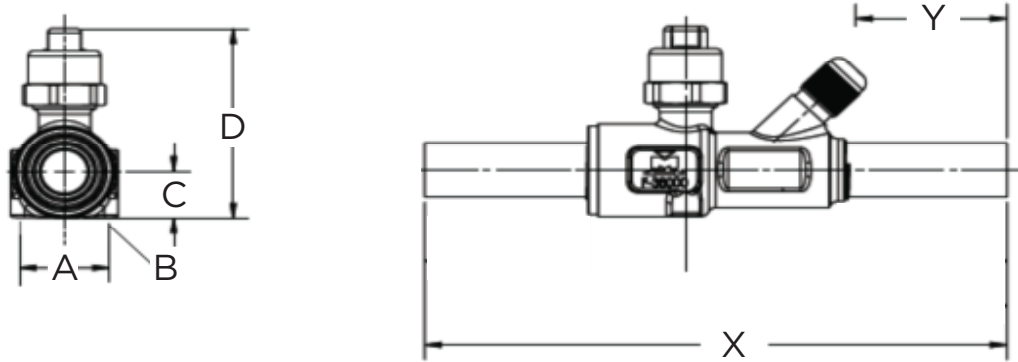
C
COPPER

PR
PRESS

H
HVAC/R

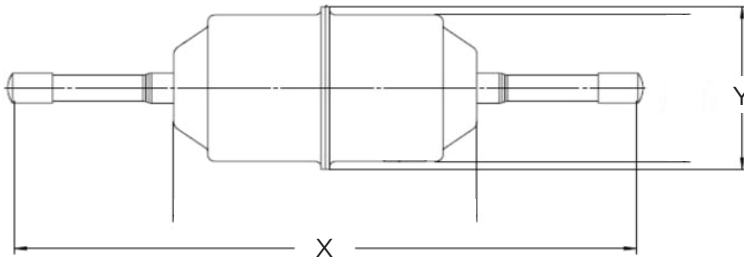
DIMENSIONAL DATA

MULTI SPLIT BALL VALVES WITH ACCESS PORT



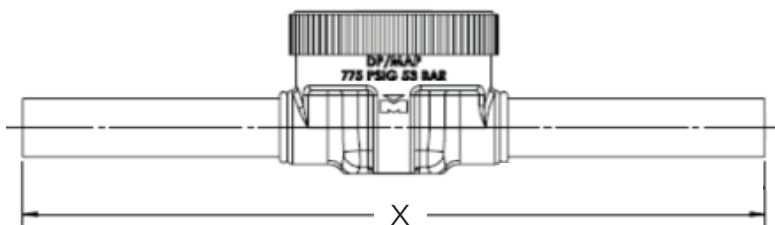
PART NO.	SIZE (IN)	A (IN)	B (MM)	C (IN)	D (IN)	X (IN)	Y (IN)	WT (LB)
RP18959	1/4	0.87	M4x0.7	0.54	2.23	6.51	1.81	.611
RP18960	3/8	0.87	M4x0.7	0.54	2.23	6.15	1.63	.622
RP18961	1/2	0.87	M4x0.7	0.54	2.23	6.43	1.64	.628
RP18962	5/8	0.87	M4x0.7	0.54	2.23	6.25	1.65	.655
RP18963	3/4	1.18	M4x0.7	0.72	2.66	6.70	1.94	.931
RP18964	7/8	1.18	M4x0.7	0.72	2.66	6.70	1.94	.961
RP17865	1-1/8	1.50	M4x0.7	1.00	3.15	8.42	2.87	1.649
RP17866	1-3/8	1.89	M6x1.0	1.17	3.72	10.2	3.25	2.534

FILTER DRIERS



PART NO.	MODEL	DESSICANT CU IN	SIZE (IN)	X (IN)	Y (IN)	WT (LB)
RP17389	HPP-083	8	3/8	8.03	2.63	1.261
RP17391	HPP-163	16	3/8	8.59	3.11	2.194
RP16649	SDP-083	8	3/8	8.16	2.32	0.767
RP16653	SDP-163	16	3/8	8.51	3.12	1.458
RP16654	SDP-164	16	1/2	8.51	3.12	1.486

SIGHT GLASS / MOISTURE INDICATORS



PART NO.	SIZE (IN)	X (IN)	WT (LB)
RP18114	1/4	4.85	0.181
RP18115	3/8	4.49	0.190
RP18116	1/2	4.71	0.249
RP18117	5/8	4.95	0.276
RP18118	3/4	5.37	0.441
RP18119	7/8	5.19	0.467
RP18120	1-1/8	6.3	0.529