

### Activated Core

- High acid adsorption
- Liquid or suction line applications



### High Capacity Core

- High drying capacity
- Liquid or suction line applications



### Charcoal Core

- Wax removal
- Liquid or suction line applications



### Suction Line Filter

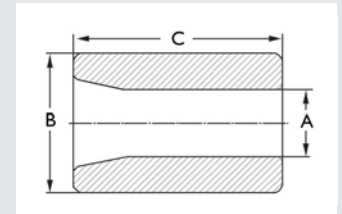
- Filter solid contaminants
- Low pressure drop
- Bi-directional



### Activated Core

Part Number	Size Cu In	A (in)	B (in)	C (in)	Wt (lb)	Water Capacity (drops)											
						R134a		R404A		R507		R22		R407C		R410A	
						75°F	125°F	75°F	125°F	75°F	125°F	75°F	125°F	75°F	125°F	75°F	125°F
P 37266	48	1.77	3.70	5.51	1.78	587	466	605	462	534	384	534	384	397	263	358	194

Water capacity data rated according to AHRI 710 standards.



### Charcoal Core

Part Number	Size Cu In	A (in)	B (in)	C (in)	Wt (lb)	Water Capacity (drops)											
						R134a		R404A		R507		R22		R407C		R410A	
						75°F	125°F	75°F	125°F	75°F	125°F	75°F	125°F	75°F	125°F	75°F	125°F
P 37267	48	1.77	3.70	5.51	1.68	533	414	551	414	497	347	497	347	364	231	339	186

Water capacity data rated according to AHRI 710 standards.

### High Capacity Core

Part Number	Size Cu In	A (in)	B (in)	C (in)	Wt (lb)	Water Capacity (drops)											
						R134a		R404A		R507		R22		R407C		R410A	
						75°F	125°F	75°F	125°F	75°F	125°F	75°F	125°F	75°F	125°F	75°F	125°F
P 36818	48	1.77	3.70	5.51	1.68	1584	1402	1671	1517	1456	1276	1456	1276	1326	1012	1084	889
P 36818 (2)	96	1.77	3.70	5.51		3169	2798	3342	3034	2912	2552	2912	2552	2651	2024	2169	1778
P 36818 (3)	144	1.77	3.70	5.51		4753	4204	5014	4554	4368	3828	4368	3828	3977	3035	3254	2667
P 36818 (4)	192	1.77	3.70	5.51		6337	5606	6685	6068	5824	5104	5824	5104	5303	4047	4338	3553

Water capacity data rated according to AHRI 710 standards.

### Suction Line Filter

Part Number	Size Cu In	A (in)	B (in)	C (in)	Wt (lb)	Filtration
						A 18733C

