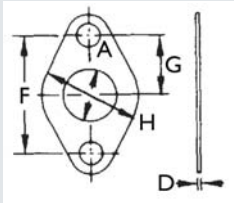
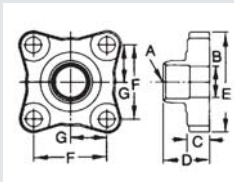


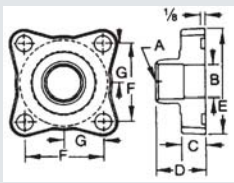
2 Bolt, Serrated Gasket Surface



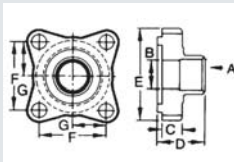
2 Bolt Gasket, Asbestos-Free



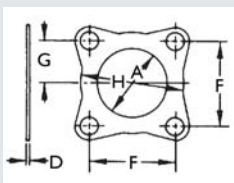
4 Bolt, Flat Gasket Surface



**4 Bolt, Groove Diameters
2 25/32" x 2 1/16"**



**4 Bolt, Flat, Tongue, Groove
Diameters 2 3/4" x 2 3/16"**



4 Bolt Gasket, Asbestos-Free

2 Bolt-Hole

Flange with Serrated Gasket Surface

Part Number	A (in)	B (in)	C (in)	D (in)	E (in)	F (in) Bolt Hole Centers	G (in)	H (in)	Dia Bolt Holes	Box Qty	Wt (lb)	Gasket
A 08314	5/8	9/16	0.75	1.19	1.50	1 5/8	0.81		11/32	1	0.45	
A 05299	3/4	11/16	0.75	1.31	1.50	1 5/8	0.81		3/8	1	0.42	
A 09215	7/8	13/16	0.75	1.44	1.50	1 5/8	0.81		11/32	1	0.40	
A 08315	7/8	13/16	0.75	1.44	2.25	2 3/4	1.38		17/32	1	1.08	
A 05151	1 1/8	1 1/16	0.75	1.56	2.25	2 3/4	1.38		17/32	1	1.11	
A 05074	1 3/8	1 19/64	0.75	1.53	2.25	2 3/4	1.38		17/32	1	0.90	

Gasket, Asbestos-Free Material

Part Number	A (in)	B (in)	C (in)	D (in)	E (in)	F (in) Bolt Hole Centers	G (in)	H (in)	Dia Bolt Holes	Box Qty	Wt (lb)	Gasket
A 04582	9/16			0.03		1 5/8	0.81	1.13	11/32	N/A	0.00	
N 02308	13/16			0.03		1 5/8	0.81	1.50	11/32	N/A	0.00	
N 02307	13/16			0.03		1 3/4	0.88	1.50	11/32	N/A	0.00	
A 05152	1 3/16			0.06		2 3/4	1.38	2.25	17/32	20	0.02	

4 Bolt-Hole

Flange with Flat Gasket Surface

Part Number	A (in)	B (in)	C (in)	D (in)	E (in)	F (in) Bolt Hole Centers	G (in)	H (in)	Dia Bolt Holes	Box Qty	Wt (lb)	Gasket
A 08624	1 1/8	1 1/16	0.75	1.56	3.41	2.50	1.25		17/32	1	1.93	A 08628
A 08625	1 3/8	1 19/64	0.75	1.63	3.41	2.50	1.25		17/32	1	1.88	A 08628
A 08626	1 5/8	1 17/32	0.75	1.75	3.41	2.50	1.25		17/32	1	1.73	A 08628
A 08627	2 1/8	1 15/16	0.75	1.72	3.41	2.50	1.25		17/32	1	1.47	A 08628

Flange with Groove Diameters 2 25/32" x 2 1/16"

Part Number	A (in)	B (in)	C (in)	D (in)	E (in)	F (in) Bolt Hole Centers	G (in)	H (in)	Dia Bolt Holes	Box Qty	Wt (lb)	Gasket
A 08630	1 1/8	1 1/16	0.75	1.56	3.41	2.50	1.25		17/32	1	1.81	A 08634
A 08631	1 3/8	1 19/64	0.75	1.63	3.41	2.50	1.25		17/32	1	1.75	A 08634
A 08261	1 5/8	1 17/32	0.75	1.75	3.41	2.50	1.25		17/32	1	1.64	A 08634
A 08633	2 1/8	1 15/16	0.75	1.72	3.41	2.50	1.25		17/32	1	1.42	A 08634

Flange with Tongue, Groove Diameters 2 3/4" x 2 3/16"

Part Number	A (in)	B (in)	C (in)	D (in)	E (in)	F (in) Bolt Hole Centers	G (in)	H (in)	Dia Bolt Holes	Box Qty	Wt (lb)	Gasket
A 08629	1 1/8	1 1/16	0.75	1.72	3.41	2.50	1.25		17/32	1	2.00	A 08634
A 05150	1 3/8	1 19/64	0.75	1.78	3.41	2.50	1.25		17/32	1	1.98	A 08634
A 05148	1 5/8	1 17/32	0.75	1.91	3.41	2.50	1.25		17/32	1	1.87	A 08634
A 08632	2 1/8	1 15/16	0.75	1.88	3.41	2.50	1.25		17/32	1	1.59	A 08634

Gasket, Asbestos-Free Material

Part Number	A (in)	B (in)	C (in)	D (in)	E (in)	F (in) Bolt Hole Centers	G (in)	H (in)	Dia Bolt Holes	Box Qty	Wt (lb)	Gasket
A 08628	2 1/16			0.03		2.50	1.25	3	9/16	N/A	0.01	